

Transducers and accessory

L12-5Q



5 - 12 MHz
Linear Array
Small parts, abdomen

L17-7Q



7 - 17 MHz
Linear Array
Small parts, abdomen

C5-2Q



2 - 5 MHz
Curved Array
Large breed abdomen

MC8-4Q



4 - 8 MHz
Micro-convex Array
Abdomen, basic cardiac

P5-1Q



1 - 5 MHz
Phased Array
Cardiac

P7-3Q



3 - 7 MHz
Phased Array
Cardiac

VEL12-5Q



5 - 12 MHz
Endocavity Linear Array
Reproduction

VEL8-3WQ



3 - 8 MHz
Endorectal Linear Array
Reproduction

MC9-3TQ



3 - 9 MHz
Micro-convex Array
Equine hoof, abdomen, cardiac

MT-808



Trolley System

Veterinarian Ultrasound Within a Touch

Acclarix™ AX3 VET
Veterinary Diagnostic Ultrasound System



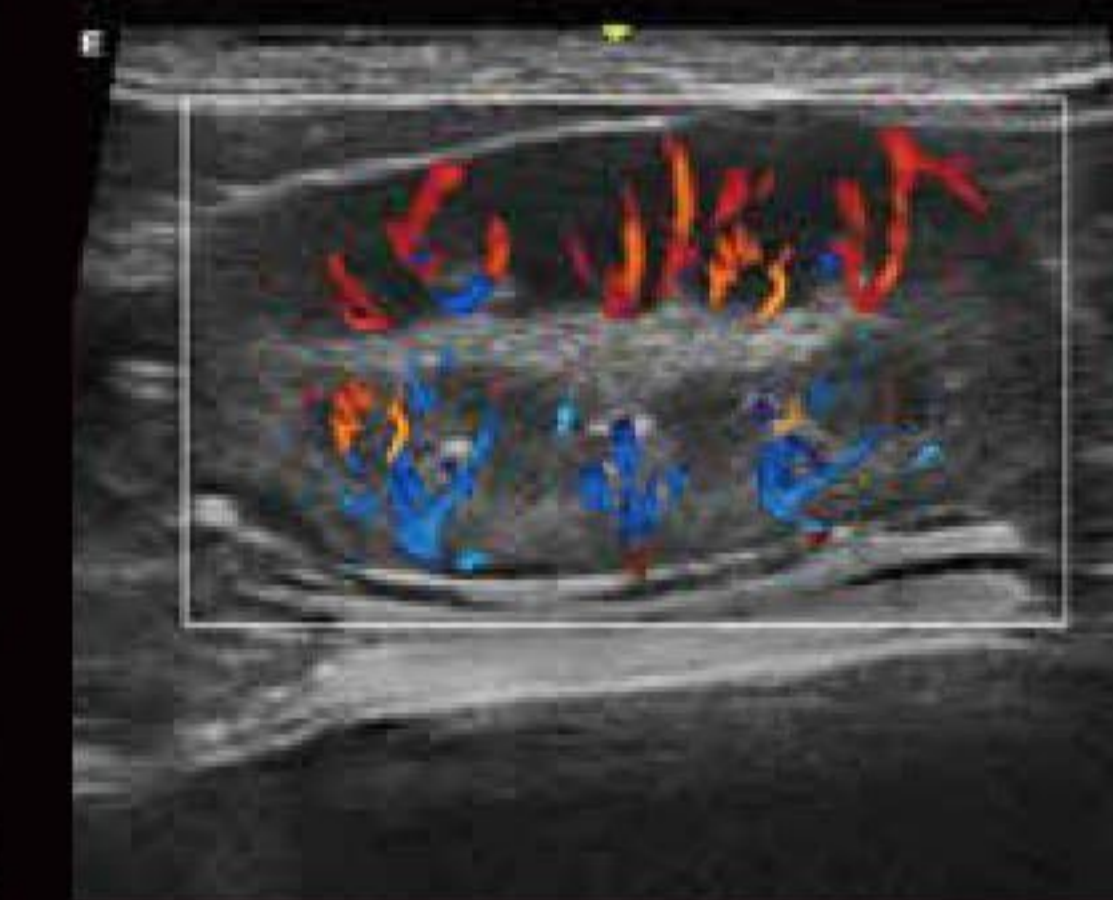


Definitive Image Quality

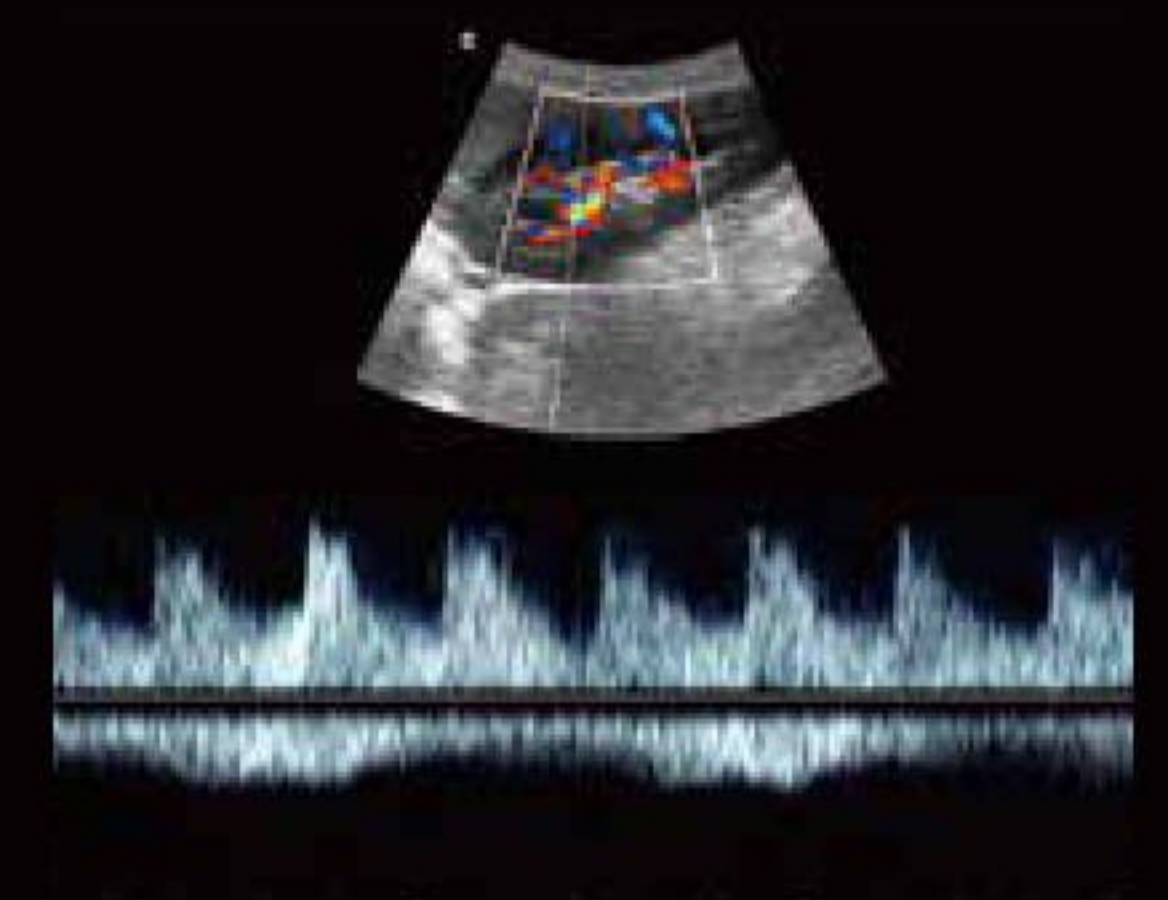
- Revolutionary platform results in superb detail resolution, particularly at depth.
- Tissue Adaptive Imaging (TAI) continuously and automatically optimizes imaging allowing more focus on different kinds of animals.



The display of canine gallbladder is excellent and the neck of it looks clear which is essential for diagnosis



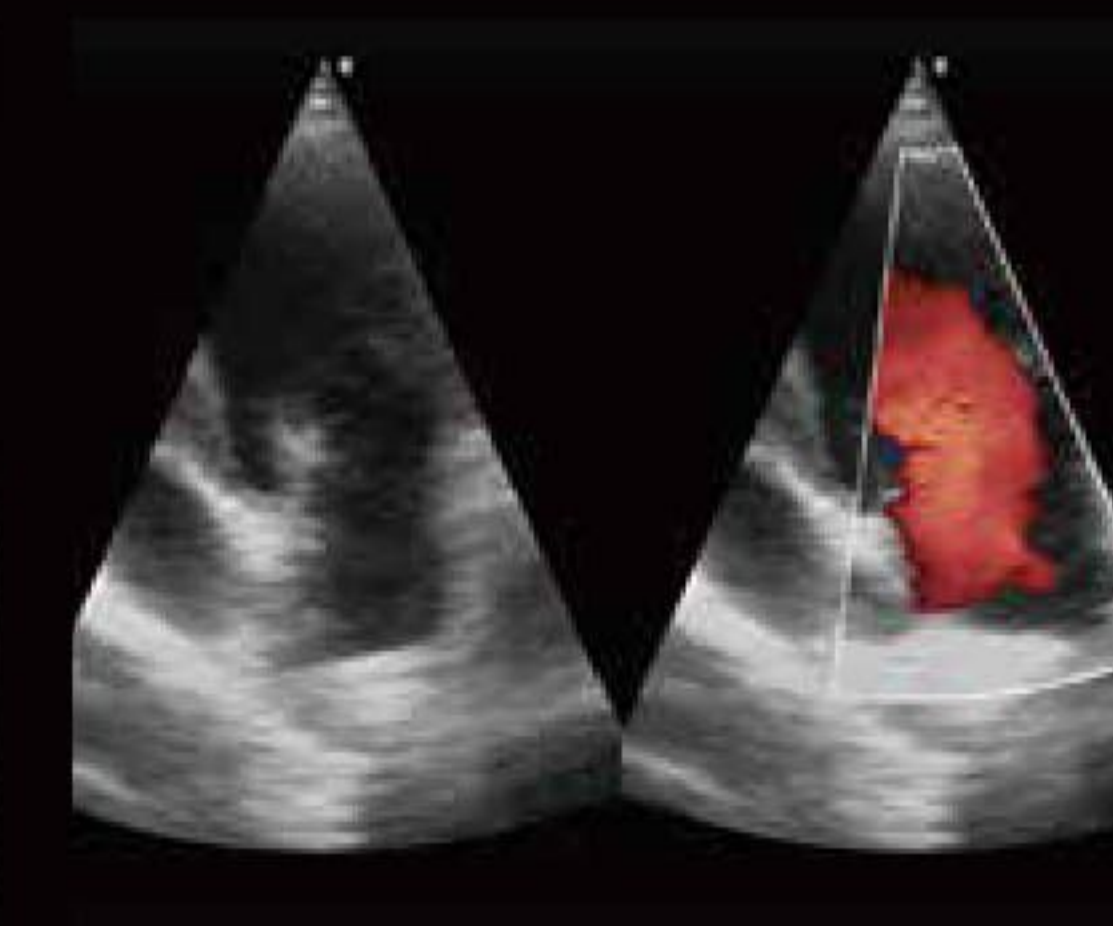
TAI provides excellent detail resolution and color sensitivity to display low flows in feline kidney



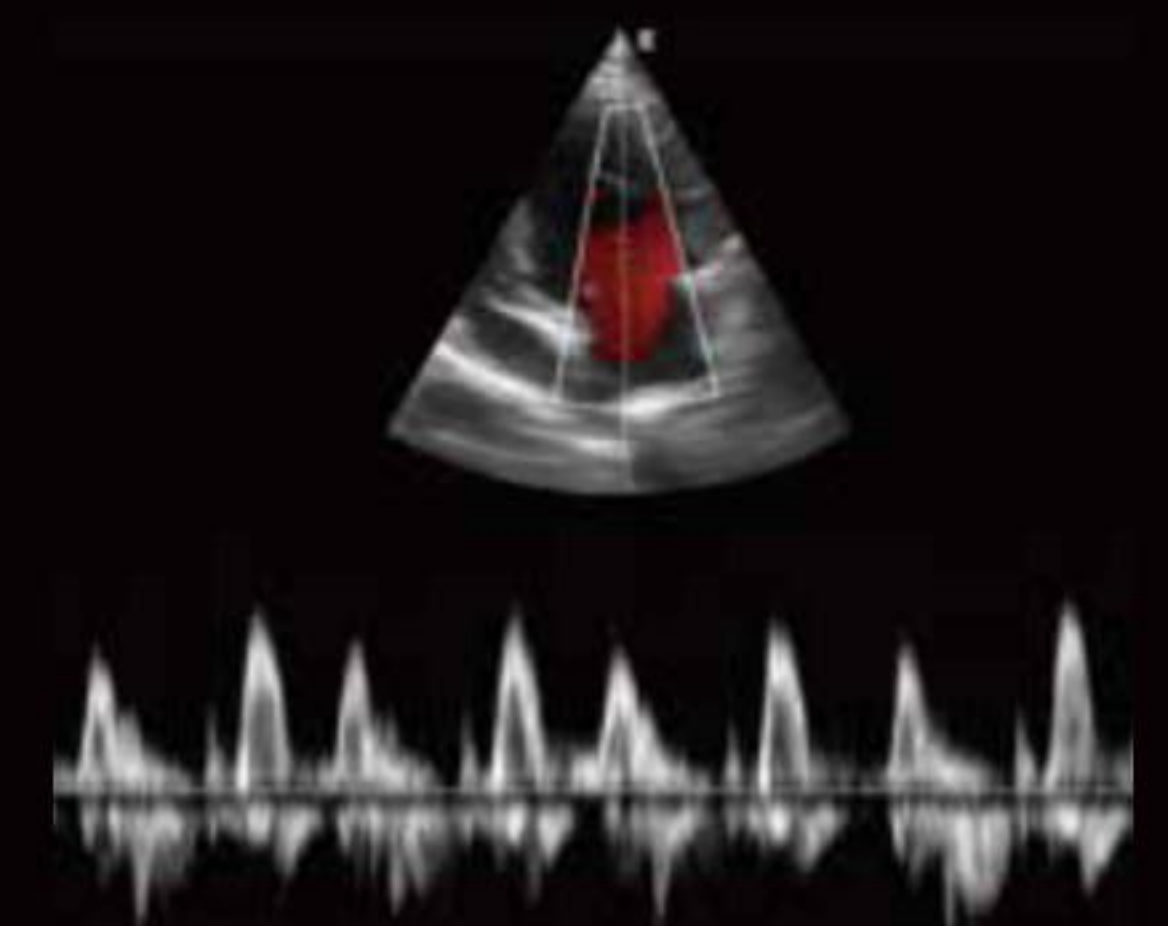
A perfect renal spectrum is advantageous for the evaluation of some important diagnostic indexes like PI and RI



The edge of this canine's bladder is smooth and internal echo is uniform which is significant for scanning



The adult phased array probe shows superb blood flow of cardiac examination even in large animals



The pediatric phased array probe delivers an excellent spectrum without any background noise especially for small animals

Redefining Innovation Through Value and Performance

The Acclarix AX3 VET has been designed from the relentless focus on delivering uncompromising performance at a cost-effective price. Along with the unique dual-sockets and dual-batteries inspiration in a 4.5kg lightweight magnesium alloy body, the remarkable Acclarix AX3 VET delivers a surprising value to meet all the demands for animals.

Intelligent Workflow

- High sensitive touch screen for daily operation
- Dedicated presets and measurement packages for veterinary applications
- Customizable user interface for personalized design
- Multiple data management methods: DICOM, network, PDF, AVI and BMP file export

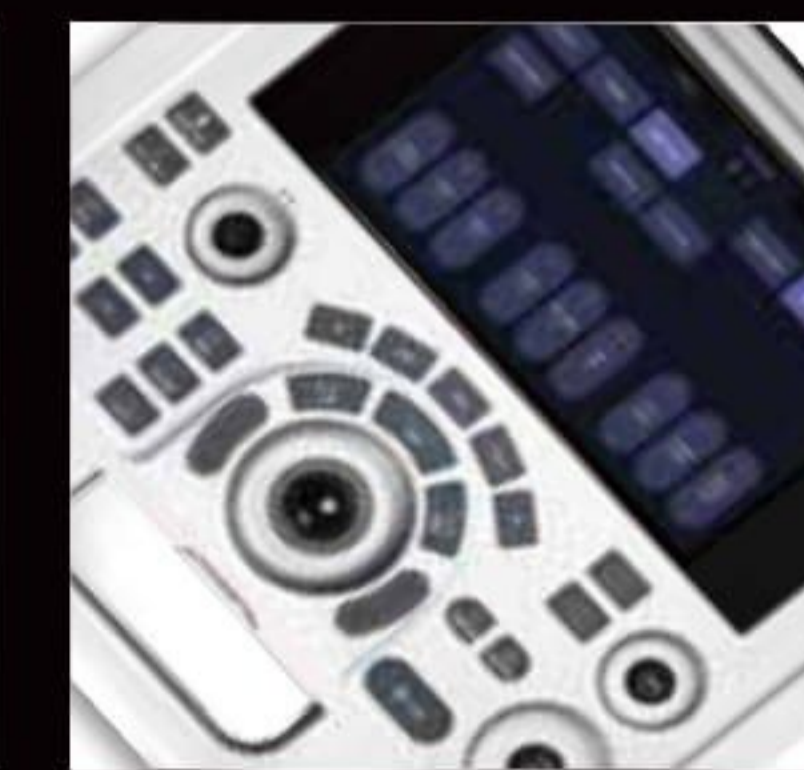
Distinctive Design



Dual transducers design can simplify workflow and improve the diagnostic efficiency



Unique dual-batteries design support ultra-long continuous scanning more than two hours



Ergonomic control panel with high sensitive touch screen ensures everything at fingertips



Ultra-light and ultra-compact design facilitates maneuverability and portability