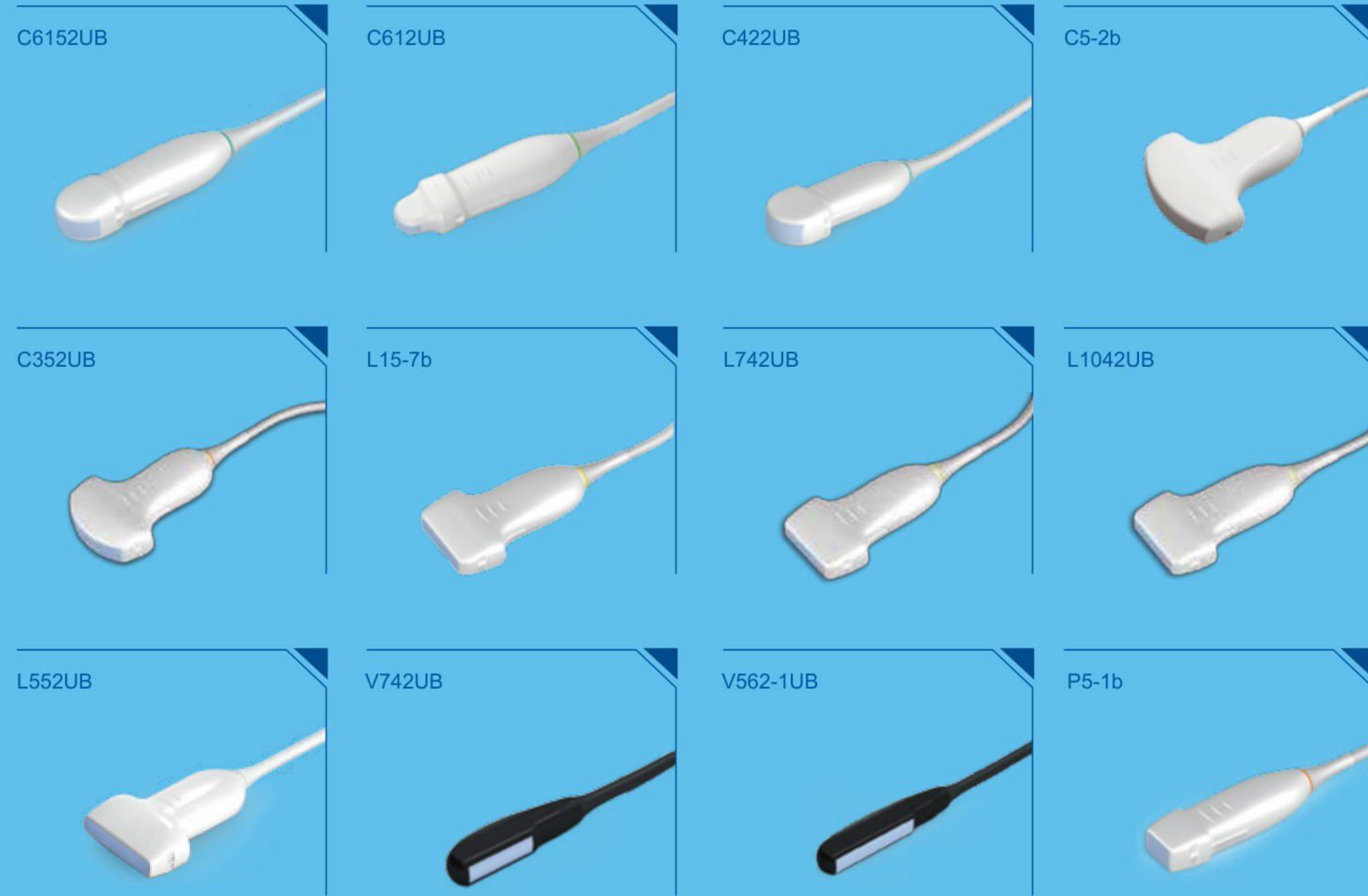


Transducer Specifics

With more than ten years of experience in transducer design and manufacturing, Edan offers a comprehensive suite of high-performance transducers with outstanding quality and reliability.



About Edan

Edan is a healthcare company dedicated to improving the human condition around the world by delivering value-driven, innovative and high-quality medical products and services. For over 20 years, Edan has been pioneering a comprehensive line of medical solutions that address a broad range of healthcare practices including:

- Diagnostic ECG
- Patient Monitoring
- OB/GYN
- Ultrasound Imaging
- Point-of-Care Testing
- *In-Vitro* Diagnostics
- Veterinary

Healthcare professionals around the world depend on Edan's breakthrough medical technologies and outstanding customer support.



ENG-US-U50 VET
V1.0-20200226

U50 VET *prime edition*

Veterinary Diagnostic Ultrasound System
Superior Value and Versatility



U50 VET *prime edition*

One system. Twelve applications. Countless patients.

Whether your imaging study requires unparalleled detail and contrast resolution for high frequency musculoskeletal imaging or superb penetration to evaluate deep abdominal targets, the suite of transducers optimized for the U50 VET ultrasound system ensures you can image more patients, across more applications, with more diagnostic confidence. Characterized by a compact, lightweight design and user-centric work flow, the U50 VET meets the need for a highly portable and easy to use ultrasound system.

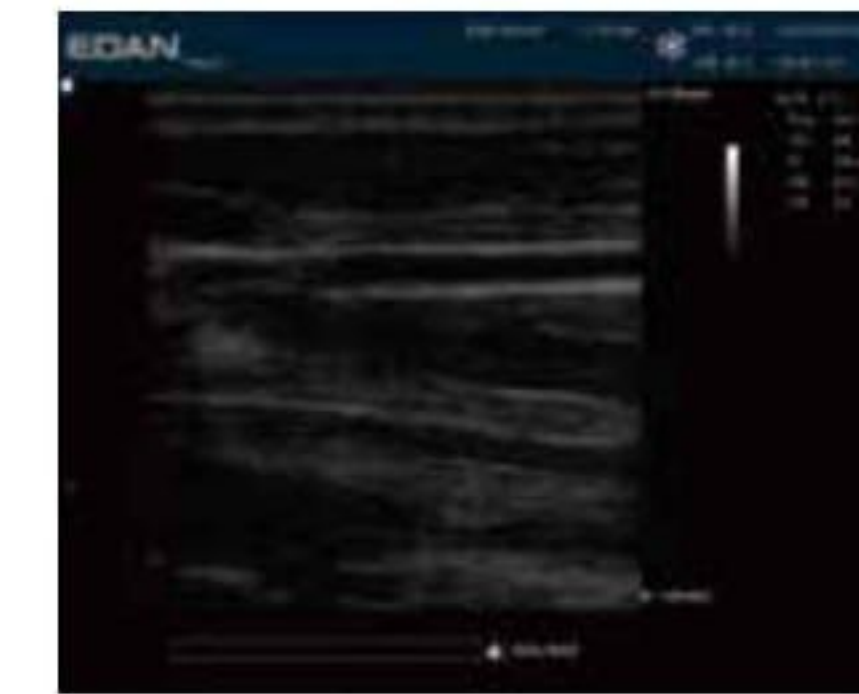


Multiple peripheral ports including VGA, composite video and USB



Technologies

From superb image quality to the streamlined user interface, the U50 VET is designed to give you more diagnostic information across target applications than similarly priced competitive systems. Advanced 2D and color Doppler imaging technologies you'd expect to find only in premium-priced systems are standard. The portable U50 VET system delivers the performance of a high-end system at a compact price.



Bovine Muscle



Bovine Uterus



Feline Kidney



Feline Subhepatic effusion



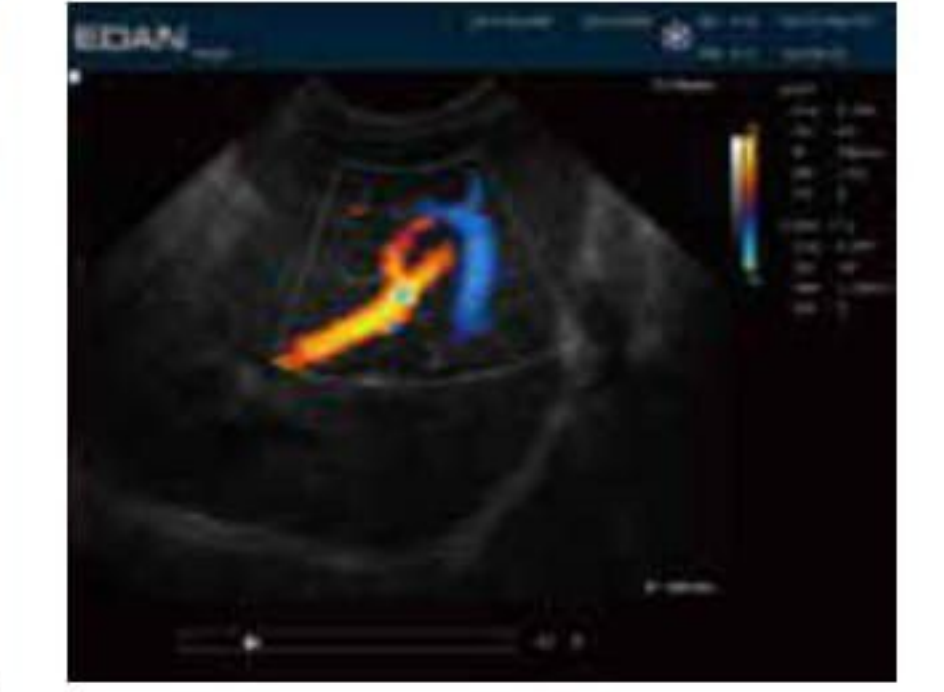
Canine Intestinal Canal



Canine Gall Bladder



Canine Kidney



Canine Liver