

Transducers

C5-2b



2-6MHz
Curved Array

C352UB



2-6MHz
Curved Array

E612UB



4-10MHz
Endocavity

P5-1b



2-4MHz
Phased Array

L15-7b



7-16MHz
Linear Array

L1042UB



5-14MHz
Linear Array

L742UB



5-10MHz
Linear Array

L552UB



4-7 MHz
Linear Array

C422UB



3-6MHz
Micro-Convex

C6152UB



5-8MHz
Micro-Convex

C612UB



5-10MHz
Micro-Convex

About Edan

Edan is a healthcare company dedicated to improving the human condition around the world by delivering value-driven, innovative and high-quality medical products and services. For over 20 years, Edan has been pioneering a comprehensive line of medical solutions that address a broad range of healthcare practices including:

- Diagnostic ECG
- Patient Monitoring
- OB/GYN
- Ultrasound Imaging
- Point-of-Care Testing
- *In-Vitro* Diagnostics
- Veterinary

Healthcare professionals around the world depend on Edan's breakthrough medical technologies and outstanding customer support.



ENG-US-U60-V1.0-20200226

U60

Diagnostic Ultrasound System

Clear. Compact. Comprehensive



U60 Diagnostic Ultrasound System

With its compact design, user-friendly operation and advanced imaging technologies, the U60 diagnostic ultrasound system offers a broad range of clinical applications to address all of your imaging needs.



Compact Design

- Compact, lightweight design facilitates mobility
- Integrated battery enables operation anywhere
- Large 15" monitor for easy viewing

Comprehensive Clinical Applications

- Full set of transducers to support all applications

Advanced Imaging Technologies

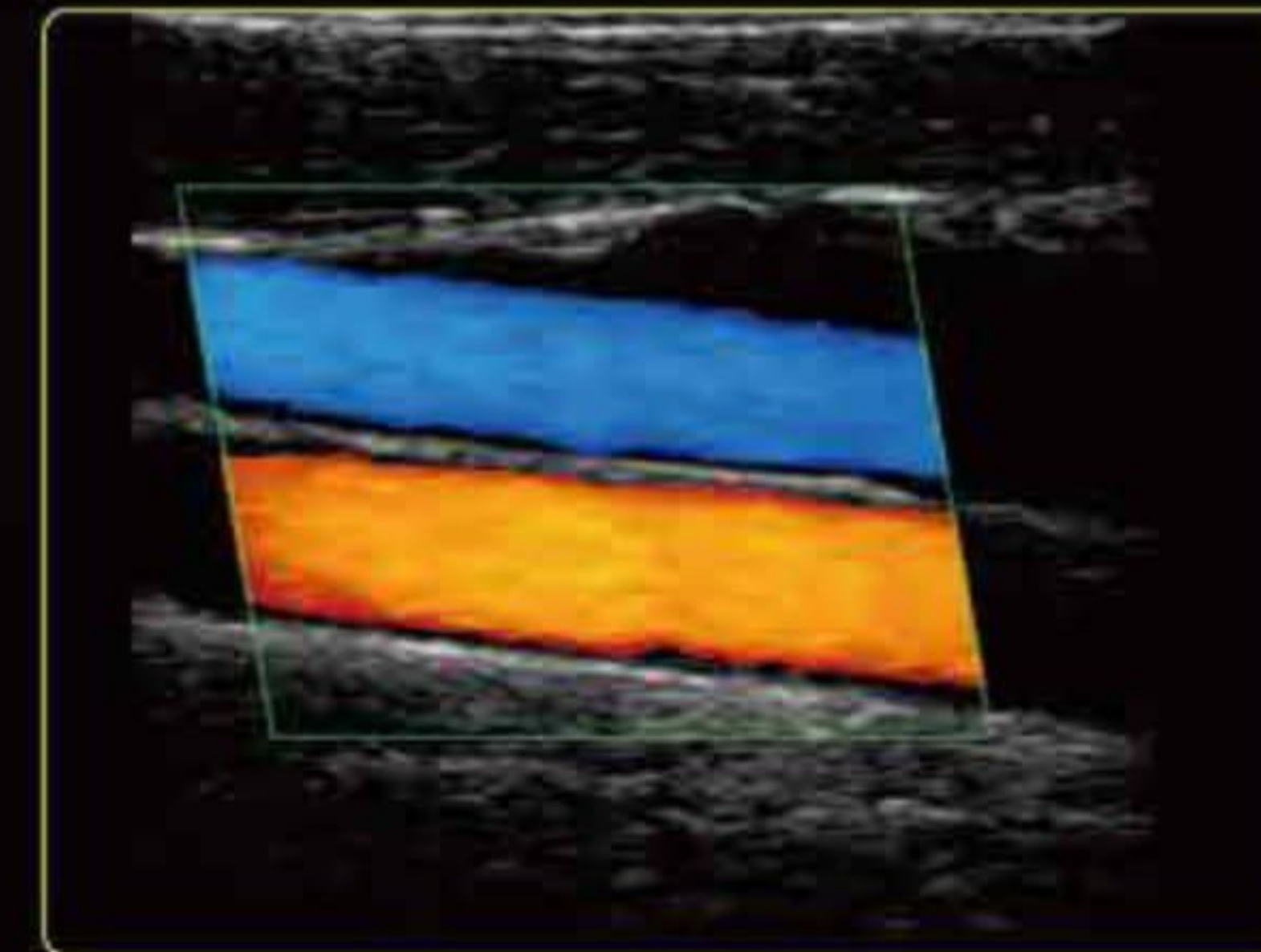
- Tissue Harmonic Imaging
- Spatial Compounding Imaging
- Speckle Reduction Imaging

User-Friendly Operation

- Backlit, easy-to-use control panel
- Customizable user defined controls
- Large capacity data storage

Excellent Image Quality

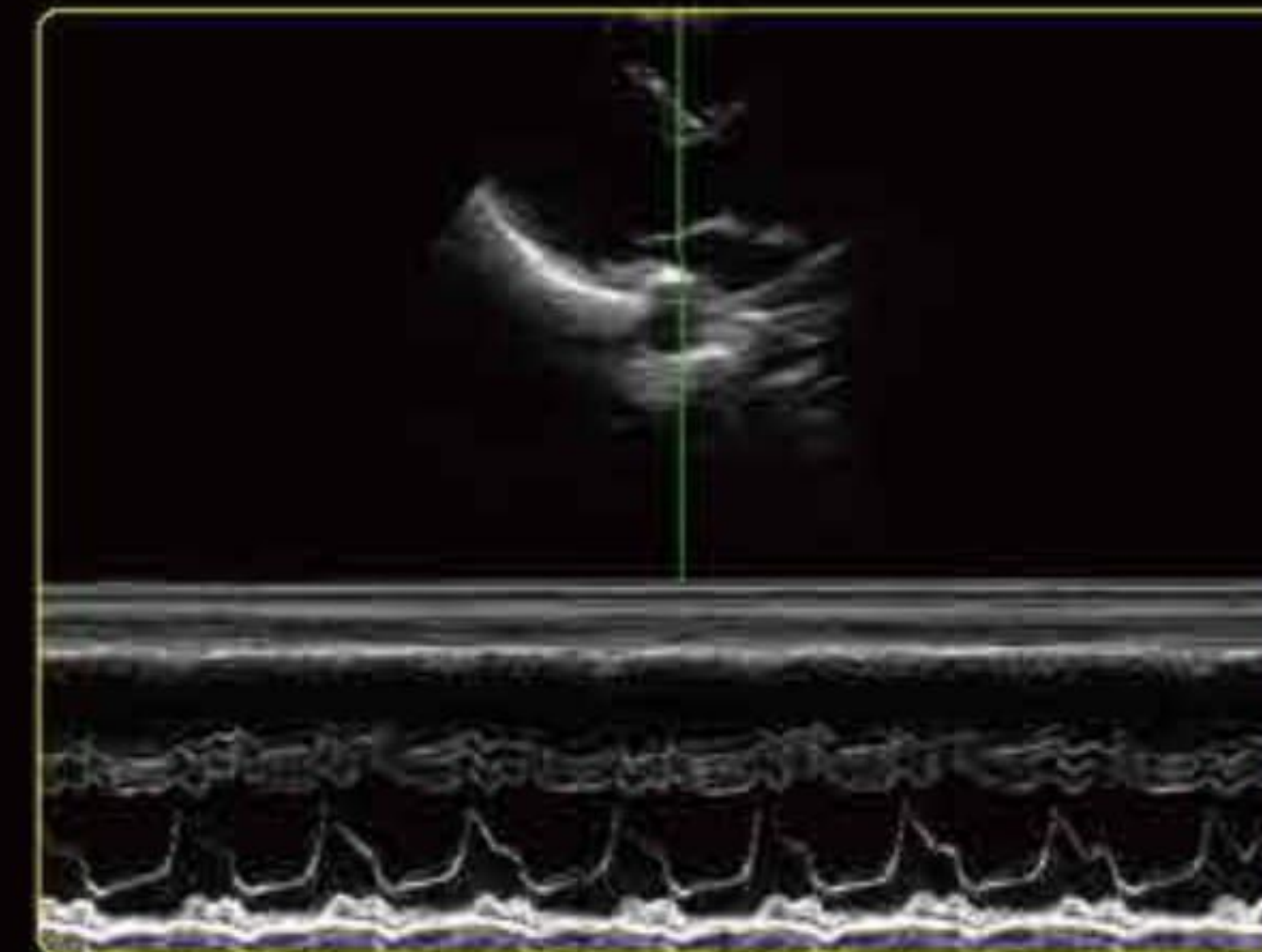
The U60 provides excellent detail, contrast resolution and image uniformity without sacrificing penetration. Excellent color and Doppler sensitivity easily detects small, low flow vessels.



Common Carotid Artery



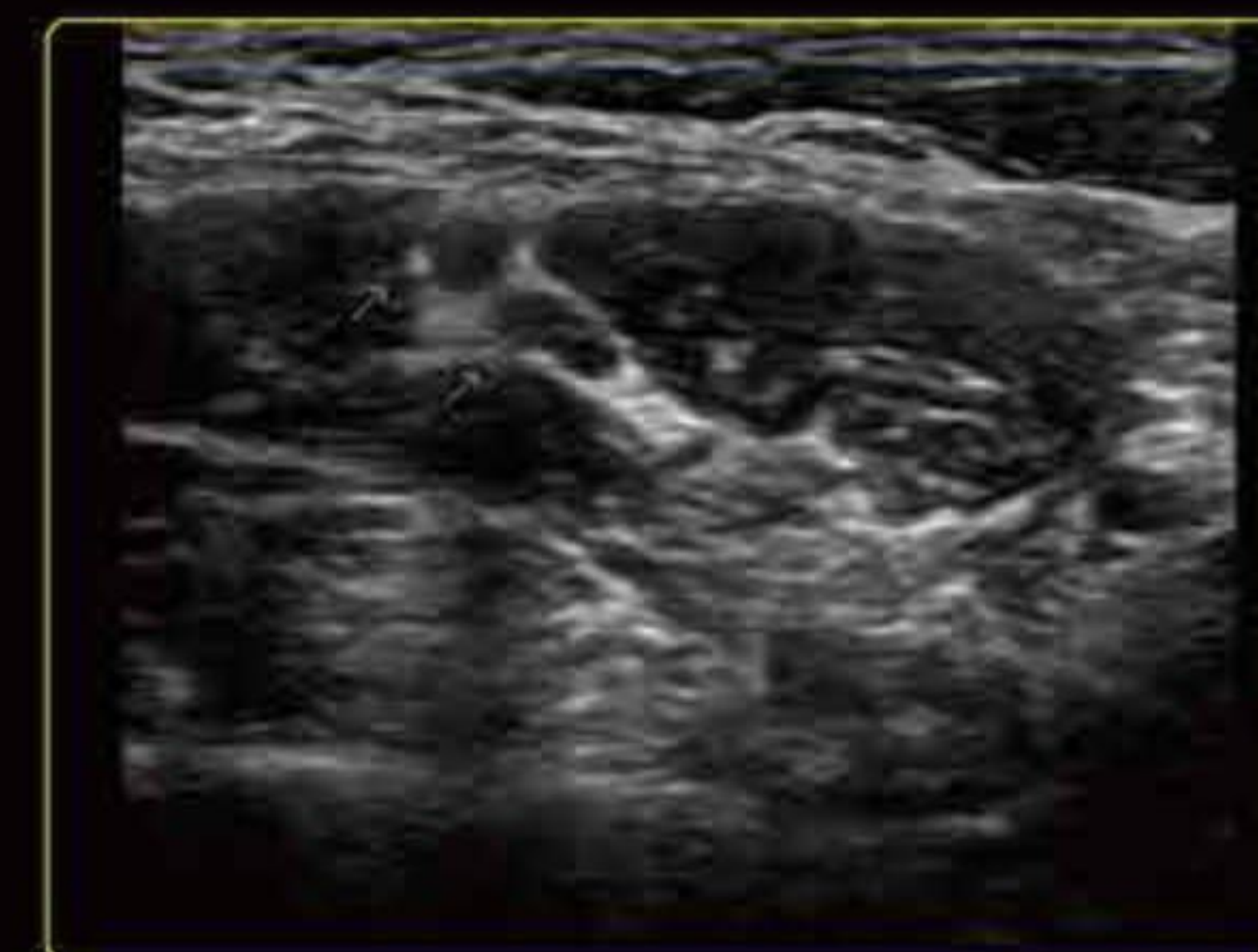
Right Hepatic Vein



Mitral Valve



Renal Vasculature



Interscalene Brachial Plexus



Umbilical Artery